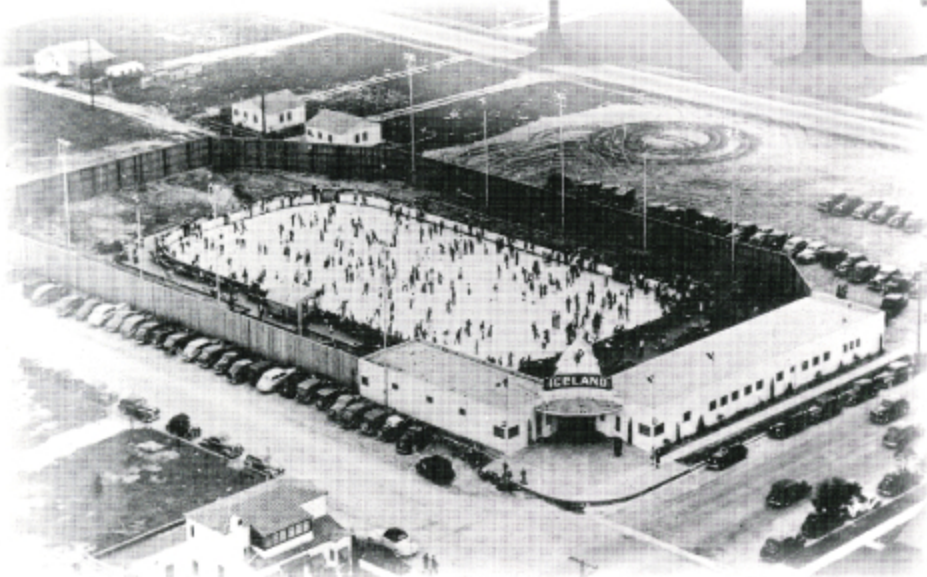


# ZAMBONI®

# NEWS



Paramount Iceland, 1940. Skaters flocked to the new facility which began as an open air ice rink.

## ZAMBONI COMPANY CELEBRATES FIFTY YEARS ON THE ICE

Since its invention in 1949, the Zamboni® ice resurfacing machine has come to be known as a constant in the world of change. Fifty years have passed since Frank Zamboni successfully innovated his way into ice arena history, and the Company is still producing machines which have legendary quality and exceed the expectations of ice arena operators.

## THE ZAMBONI STORY

The story of Frank J. Zamboni & Co., Inc. began in January of 1940, when the Iceland Skating rink opened in Paramount, California. Frank Zamboni originally built the rink as an open-air facility and Iceland was one of the largest rinks in the country. At the time, the ice resurfacing process was quite labor-intensive. It could take three to five workers up to 1 1/2 hours to complete a process which consisted of a planer being pulled behind a tractor, shaving the ice surface, followed by workers pushing away the shavings. They then would wash down the ice and the dirty water would be pushed off the ice by hand with large rubber squeegees. The washing operation was followed by a final spray of water which produced a mirror-like surface.

Realizing the need to make a good sheet of ice in a short period of time, Frank set to work on a machine which could make the ice-resurfacing process more efficient. In March of 1942, he purchased a tractor and began experimenting. The first machine concept, built on a sled and towed behind the tractor, did not produce a smooth surface and was not able to pick up the snow adequately. Frank resumed his experimentation in July of 1947. He envisioned a machine that would cut the ice, remove the snow, wash and squeegee the ice and have enough snow carrying capacity to clear the entire rink's surface in one operation. Although the initial experiment failed, he decided to take a completely different approach. His newest machine was able to

*The Zamboni Story Continued on page 3*



Richard Zamboni takes the fully restored Model A resurfacer on the ice in Vancouver, B.C.

As part of the Company's 50th Anniversary celebration, the very first machine, the Model A, underwent a comprehensive and historically accurate restoration over a two-year period. The Model A made its public debut in January of 1998 at the NHL FANtasy® in Vancouver, B.C., where the machine took to the ice with hockey's other heroes between periods of the "Old-Timers" game. Throughout the anniversary year, the Model A will have been seen by thousands of Zamboni fans. When the machine is not traveling around the country, it can be seen at its original home, Paramount Iceland.

